

ONLINE AUCTION

Legal Instruction -

Construction Auction



Starts: 19 April @ 10am

Ending: 21 April from 12pm

Location: Pretoria East

Viewing: 19, 20 & 21 April 2022

Omrich: 071 895 0459/Office: 010 010 5003





ONLINE AUCTION

Register to bid:

<https://online.devcoauctioneers.co.za>

Bidding Starts Closing from 12h00 on 21 April 2022
De Villebois Mareuil Drive,
Moreleta Park, Pretoria

DEPOSIT: Refundable registration deposit of R20 000 (Twenty Thousand Rand) payable by EFT.
Refundable registration deposit of R50 000 (Fifty Thousand Rand) payable by EFT for Cross Border Clients
No Cash accepted on site. Cash deposits into our bank account will attract a 2% cash deposit fee.

Account Name: Devco Auctioneers & Sales
Bank: First National Bank
Branch: Menlyn Square
Branch Code: 252445
Account Number: 62361071336

Account Name: Devco Auctioneers & Sales
Bank: Standard Bank
Branch: Castle Walk
Branch Code: 14645
Account Number: 242416535

Account Name: Devco Auctioneers & Sales
Bank: Absa Bank
Branch: Meyerton
Branch Code: 632005
Account Number: 4099919561

Buyers Premium: 12% excluding VAT on all items

Vat: All bids exclude 15% Vat

Documentation Fee: R1950 plus VAT per asset that has natis document, natis documents will be available between 7-14 days after the auction.

Auction Info:

- **Meyerton (JHB):** Omrich 071 895 0459 or omrich@devco.za.net / Tyron 081 249 0626 or tyron@devco.za.net
- **Pietermaritzburg (KZN):** Deon 083 357 8589 or deon@devco.za.net

Registration info:

- **Boudine:** 073 304 9024 / **Diana** 078 319 7402 / **Lisa:** 082 451 4651
- auctions@devco.za.net

Payment: 22 April 2022 by 12h00, funds must reflect in our bank account before any item will be released and the invoice must be paid in full. Any cash payments in our bank account exceeding R24 999.99 will be reported to the Financial Intelligence Centre.

Finance: All finance deals are handled by Auction Finance, please contact **Anton Muller on 083 790 0090**

Dispatching times: Within 5 working days after the auction has finished, there will be no dispatching on Saturdays / Sundays or public Holidays. Dispatching will take place from 9am - 4pm. Storage of **R250.00** plus Vat per item will be charged on late collections.

Devco will not be able to assist with loading of any goods. Kindly arrange your own assistance with the correct safety equipment and qualified staff to avoid damage or injury.

Conditions of Sale: Please refer to our Standard Conditions of Sale on your buyers registration card, which applies to all registered buyers. Each and every lot is sold as is with no duty to repair, no guarantees or warranties. The Kilometers and hours on all items **are not** guaranteed by the auctioneer. This catalogue is a guide and we will not be responsible for errors in the descriptions. An auction site is potentially a dangerous place and every single person at the auction site before, during and after an auction is present at his or her own risk. The auctioneers, their agents and employees are not responsible for any claim. The auctioneer reserves the right to revoke any bid card at anytime. Items may be withdrawn without prior notice. The auction is subject to a right to bid by or on behalf of the owner or auctioneer, in which case the owner or auctioneer, or any one person on behalf of the owner or auctioneer, in which case the owner or auctioneer as the case may be, may bid at the auction. Please note the company that you register under will be the company that will be invoiced. if you purchase on behalf of more than one company, please ensure that you have a buyer's card for each company. Our auction is conducted in terms of section 45 of the Consumer Protection Act which excludes section 55 and 56

NOTES:

- * If a lot receives a bid within the last 10 min. It will remain open for an additional 3 min.
- * If any further bidding occurs, the extension timer will reset to 3 min.
- * If no further bidding activity occurs, the lot closes when the timer runs out.



01

**Floor Sweepers (x3)**

LOCATED IN PTA

02

**Generator w/ Kohler Engine**

LOCATED IN PTA

03

**Pressure Washer**

LOCATED IN PTA

04
a-m**Brick Cutter**

LOCATED IN PTA

05a

**DeWalt 770 Table Saw**

LOCATED IN PTA

05b

**Turner Morris Concrete Floor Cutter**S/N: CSP18
LOCATED IN PTA

05c

**Table Saw**

LOCATED IN PTA

05d

**Concrete Mixer**

LOCATED IN PTA

05e

**Concrete Mixer (No Engine)**

LOCATED IN PTA

05f

**Concrete Mixer (Electric)**

LOCATED IN PTA

07

**Scissor Lift (Not Working)**

LOCATED IN PTA

08
a-d**Conveyors 13m**

LOCATED IN PTA

09
a-c**Conveyors 9m**

LOCATED IN PTA

10
a-b**Conveyors 15m**

LOCATED IN PTA

12

**1000L Water Bowser Trailer**REG: CT82PWGP
VIN: AA9B115BMDHWX1414
LOCATED IN PTA

13

**Brickfork**

LOCATED IN PTA

14



**Girders VT 20K L = 2.90 m
Formwork Girder**
LOCATED IN PTA

15a



Caterpillar TLB Bucket
LOCATED IN PTA

15b



Skidsteer Buckets (x3)
LOCATED IN PTA

16



Generators 110 KVA
CPJ110K07009491
LOCATED IN PTA

16a



**Hydro vane no 4 HV 830-
000121-1209**
LOCATED IN PTA

16b



Hydro vane no 4 H
LOCATED IN PTA

17



TLB Tyres & Rims (x8)
LOCATED IN PTA

18



FreeStanding Spot Lights
LOCATED IN PTA

21



12m Store Container no 22
REF: DBXU859394
LOCATED IN PTA

22



12m Store Container no 17
REF: PCIU987689
LOCATED IN PTA

23



12m Store Container no 14
REF: DBXU823712
LOCATED IN PTA

24



12m Store Container no 01
REF: DBXU709137
LOCATED IN PTA

25



12m Store Container no 26
REF: DBXU513281
LOCATED IN PTA

26



12m Store Container no 21
REF: DBXU827541
LOCATED IN PTA

27



12m Sleeping Container no.01
LOCATED IN PTA

28



12m Store Container no 04
REF: DBXU833895
LOCATED IN PTA

29

**12m Store Container no 10**REF: DBXU833489
LOCATED IN PTA

30

**12m Store Container no 13**REF: DBXU726535
LOCATED IN PTA

31

**6m Toilette Container no 01**

LOCATED IN PTA

32

**6m Turnstile Container no 02**

LOCATED IN PTA

33

**6m Toilette Container no 04**

LOCATED IN PTA

34

**6m Store Container 33**

LOCATED IN PTA

35

**6m Office Container no 27**

LOCATED IN PTA

36

**6m Office Container No21**

LOCATED IN PTA

37

**6m Store Container 25**

LOCATED IN PTA

38

**6m Store Container 35**

LOCATED IN PTA

39

**6m Store Container 05**

LOCATED IN PTA

40a

**Waffle 325 mm (+/- 5712)**

LOCATED IN PTA

40b

**Waffle 425 mm (+/- 6535)**

LOCATED IN PTA

40c

**Waffle 225 mm (+/- 602)**

LOCATED IN PTA

41a -
41zz**DB Board Small**

LOCATED IN PTA

42

**Loading Platforms (+/- 11)**

LOCATED IN PTA

42a
-42h



DB Board medium

LOCATED IN PTA

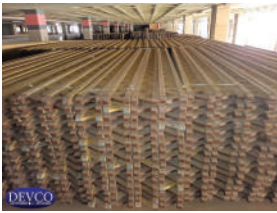
44a
-44d



DB Board Large

LOCATED IN PTA

46



Assorted Girders GT / VT

LOCATED IN PTA

47



Variuos Size Circular Column Boxes

LOCATED IN PTA

48



Strongbacks (3000 / 3300 / 3600 / 4000)

LOCATED IN PTA

49



Corner Scaffolding Brackets EGB & TRG

LOCATED IN PTA

50



Steel Waler SRZ / SRZZ

LOCATED IN PTA

51



6m Storage Container No8

LOCATED IN PTA

53



6m Toilette Container no 06

LOCATED IN PTA

54



6m Turnstile Container no 01

LOCATED IN PTA

55



6m Office Container no 10

LOCATED IN PTA

56



6m Store Container 29

LOCATED IN PTA

57



6m Store Container 38

LOCATED IN PTA

58



6m Office Container no 09

LOCATED IN PTA

59



6m Office Container no 04

LOCATED IN PTA

60



12m Store Container no 31 (Toilette)

LOCATED IN PTA

61



RET Hanging Brackets, Stays & Panel Joining Frames

LOCATED IN PTA

62



Various Size 3.0m Steel Plates (Column Boxes)

LOCATED IN PTA

63



Column Box Small, Main Sides & Type C Panels

LOCATED IN PTA

64



ADJ Column Boxes 1200/1800/3000 x 1000

LOCATED IN PTA

65a



Assorted Lifting Chains (1,2 & 4 Legged Chains)

LOCATED IN PTA

65b



Assorted Site Furniture (Chairs, Table, Cabinets)

LOCATED IN PTA

66



6m Store Container 19

LOCATED IN PTA

67



6m Office Container no 15

LOCATED IN PTA

68



6m Store Container 31

LOCATED IN PTA

69



6m Office Container no 07

LOCATED IN PTA

70



6m Office Container

LOCATED IN PTA

71



6m Office Container no 06

LOCATED IN PTA

72



6m Office Container no 18

LOCATED IN PTA

73



6m Store Container 09

LOCATED IN PTA

74



6m Office Container

LOCATED IN PTA

75



6m Office Container no 26

LOCATED IN PTA

76

**6m Office Container no 14**

LOCATED IN PTA

77

**Meerkat Forklift (ZLY10F)**

YEAR: 2014
S#: F140915074
COMMENTS: STARTER / HRS AS PER METER
LOCATED IN PTA

78

**6m Store Container 02**

LOCATED IN PTA

79

**6m Office Container no 20**

LOCATED IN PTA

80

**Meerkat Forklift (ZLY10F)**

YEAR: 2014
S#: F140915069
KMS/HOURS: 4831 HRS
COMMENTS: STARTER / HRS AS PER METER
LOCATED IN PTA

81

**Store Container no 17**

LOCATED IN PTA

82

**12m Office Container**

LOCATED IN PTA

83

**Potain MDT70 Self Erector Crane (HDT70A)**

YEAR: 2002
S#: 89429
LOCATED IN PTA

84

**12m Store Container no 36**

LOCATED IN PTA

85

**Liebherr Tower Crane 112ECH no 5**

LOCATED IN PTA

86

**Liebherr Tower Crane 154 ECH no 7**

YEAR: 2001
S#: 32642202
LOCATED IN PTA

87

**Liebherr Tower Crane HC 80 no 4**

LOCATED IN PTA

88

**Liebherr Tower Crane HC 90 no 2 - (No Plate)**

LOCATED IN PTA

89

**9m Railway Tracks (+/-25 pcs)**

LOCATED IN PTA

90

**12m Office Container no.02**

LOCATED IN PTA

91

**Assorted Safety & Warning Signs**

LOCATED IN PTA

92



Assorted Steel Gates (Single & Double)

LOCATED IN PTA

93



Loading Platform 2.4 x 2.1 x 3t (x6)

LOCATED IN PTA

94



Isuzu NQR 500 Series Drop-side Truck

YEAR: 2008
REG: XNR438GP
VIN: ADMNR75RF5G459076
ENG: 4HK1629830
KMS/HOURS: 325731 KMS
COMMENTS: STARTER / KM'S AS PER ODO
LOCATED IN PTA

95



Kato NK 160 - 16Ton Swivel Crane

REG: FXK033GP
S#: CT-162199
COMMENTS: STARTER
LOCATED IN PTA

96



Tadano Mobile TR-160M

YEAR: 1991
REG: WZM627GP
VIN: TR1610115
ENG: 6D31024771
S#: 525240
COMMENTS: STARTER
LOCATED IN PTA

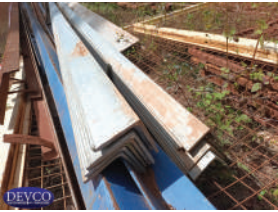
97a



6m Steel Pipes, Steel Gates & Frames

LOCATED IN PTA

97b



6m Galvanized Angle Iron, Scrap Steel & Gates

LOCATED IN PTA

98



Isuzu NQR 500 Series Dropside Truck

YEAR: 2008
REG: WYK907GP
VIN: ADMNR75RF5G459076
ENG: 4HK1629830
KMS/HOURS: 130775 KMS
COMMENTS: STARTER / KM'S AS PER ODO
LOCATED IN PTA

99



Mercedes-Benz Atego 1517 w/ Palfinger PK15500 crane

YEAR: 2008
REG: XBK778GP
VIN: WDB9700786L276933
ENG: 90491100704756
KMS/HOURS: 273309 KMS
COMMENTS: STARTER / KM'S AS PER ODO
LOCATED IN PTA

100



Industrial Deck 25 x 250 (+/- 4000)

LOCATED IN PTA

101



Industrial Deck 25 x 200 (+/- 1500)

LOCATED IN PTA

102



Assorted Pus - Pull Props

LOCATED IN PTA

103a



Slab Prop Ras 30 - 350 (+/- 3000)

LOCATED IN PTA

103b



Slab Props Pep 30-350

LOCATED IN PTA

104



Various Size Main Sides (Column Boxes)

LOCATED IN PTA

104a



Cross Forkhead TR 38-70/50

LOCATED IN PTA

104b		Ringlock Spigot Forkheads LOCATED IN PTA	105		IBR Roof sheets 6m (+/- 130) IBR Roof sheets 7m (+/- 38) LOCATED IN PTA
106		Isuzu FTR 850 Dropside YEAR: 2012 REG: BV13PVGP VIN: ADMFTR34H8G585004 ENG: 6HK1615756 KMS/HOURS: 208463 KMS COMMENTS: STARTER / KM'S AS PER ODO LOCATED IN PTA	107		Ringlock Forkhead Jacks (+/- 2040) LOCATED IN PTA
108		Ledger Brace UBH Flex 250/100 2642mm (+/- 1523) LOCATED IN PTA	109		Guardrail Holder, Handrail Holder & Safety Stand LOCATED IN PTA
110		Crate Pallet 80 x 120 Black (+/- 107) LOCATED IN PTA	111		Ledgers UH 250 (+/- 16231) LOCATED IN PTA
113		Toeboard Steel UPY 72/200/250 LOCATED IN PTA	114		Top Standard UVH 125 (+/- 208) LOCATED IN PTA
116		Standards UVR 100 (+/- 14) LOCATED IN PTA	117		Top Standard UVH 150 (+/- 347) LOCATED IN PTA
118		Top Standard UVH 250 (+/- 4437) LOCATED IN PTA	119		Ledger Brace UBL 250/150 2705mm (+/- 2748) LOCATED IN PTA
120		Assorted Push-Pull Props LOCATED IN PTA	121		Ledger Brace UBL 100/150 1677mm (+/- 3304) LOCATED IN PTA

122a



**Ledger Brace UBL 150/50
1250mm (+/- 523)**
LOCATED IN PTA

122b



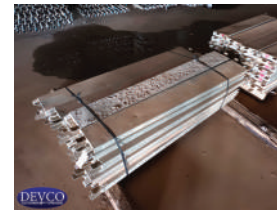
**Ledger Brace UBL 200/100
2150mm (+/- 628)**
LOCATED IN PTA

123



**Ringlock Scaff/Board (1300 /
1600 / 2500)**
LOCATED IN PTA

124



**Ringlock Toe - Board 1300mm
/ 1800mm / 2500mm**
LOCATED IN PTA

127



**Banana Bucket 500L / 1000
L (x3)**
LOCATED IN PTA

128



**1 Cube Concrete Chutes (x2
Large / x2 Small)**
LOCATED IN PTA

129



Tumblers (x2) Not Complete
LOCATED IN PTA

130



12m Store Container no 27
LOCATED IN PTA

130a



Spigot ULT 32 (+/- 104)
LOCATED IN PTA

131



12m Store Container no 29
LOCATED IN PTA

132



6m Office Container no 24
LOCATED IN PTA

133



12m Store Container no 15
LOCATED IN PTA

134



12m Store Container no 28
LOCATED IN PTA

135



12m Office Container
LOCATED IN PTA

136



12m Store Container no 02
LOCATED IN PTA

137



12m Store Container no 05
LOCATED IN PTA

138

**12m Toilet Container no 03**

LOCATED IN PTA

139

**12m Store Container no 06**

LOCATED IN PTA

141

**Ringlock Ledger 2500mm (Red) (+/- 17253)**

LOCATED IN PTA

142

**Ringlock Ledger 1600mm (Grey) (+/- 930)**

LOCATED IN PTA

143

**Ringlock Ledger 1300mm (Green) (+/- 5014)**

LOCATED IN PTA

144

**Ringlock Ledger 1800mm (Purple) (+/- 3692)**

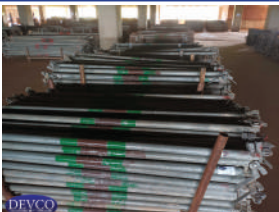
LOCATED IN PTA

145

**Ringlock Diagonal Brace 1800x1500x2260mm (Purple) (+/- 1909)**

LOCATED IN PTA

146

**Ringlock Diagonal Brace 1300x1500x1900mm (green) (+/- 1825)**

LOCATED IN PTA

147

**Ringlock Diagonal Brace 2000x1500x2440mm (Turquoise) (+/- 310)**

LOCATED IN PTA

148

**Ringlock Diagonal Brace 2500x1500x2800mm (Red) (+/- 4152)**

LOCATED IN PTA

149

**Ringlock Diagonal Brace 1000x1500x1760mm (Blue) (+/- 4288)**

LOCATED IN PTA

150

**Ringlock Ledger 2000mm (Turquoise) (+/- 607)**

LOCATED IN PTA

152a

**Ringlock Stair 2500x2000x530 (+/- 213)**

LOCATED IN PTA

152b

**Ringlock Staircase Handrails (+/- 93)**

LOCATED IN PTA

153

**Hook on ladder 2.0 (+/- 335)**

LOCATED IN PTA

156

**6m Store Container 18**

LOCATED IN PTA

157

**6m Store Container 22**

LOCATED IN PTA

158

**6m Store Container 48**

LOCATED IN PTA

159

**6m Store Container 15**

LOCATED IN PTA

160

**12m Store Container no 23**

LOCATED IN PTA

161

**6m Store Container 21**

LOCATED IN PTA

162

**12m Store Container no 18**

LOCATED IN PTA

163

**12m Store Container no 12**

LOCATED IN PTA

164

**12m Store Container no 07**

LOCATED IN PTA

165

**12m Store Container no 12**

LOCATED IN PTA

166

**Steel Hoist Baskets (x2)**

LOCATED IN PTA

167

**Steel I-Beam Structure w/
4ton Gentries (Hoist not incl.)**

LOCATED IN PTA

168

**Hand Pulley Hoist (400kg) &
2x Baskets**

LOCATED IN PTA

171

**12m Store Container no 19**

LOCATED IN PTA

172

**12m Store Container no 08**

LOCATED IN PTA

173

**12m Store Container no 20**

LOCATED IN PTA

174

**6m Store Container 34**

LOCATED IN PTA

175

**12m Store Container no 16**

LOCATED IN PTA

176

**12m Store Container no 09**

LOCATED IN PTA

177

**12m Store Container no 07**

LOCATED IN PTA

178

**6m Store Container 10**

LOCATED IN PTA

179

**Dagga Bucket plastic Red**

LOCATED IN PTA

180

**Various Steel Frames & Aluminium Ladders**

LOCATED IN PTA

181

**I-Beams (Various Lengths & Sizes) (140x 1670, 3444, 3795 / 160x 3056, 3150)**

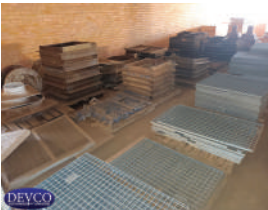
LOCATED IN PTA

182

**Castor 200 DIA 38 Spigot (+/- 255)**

LOCATED IN PTA

183

**Cast Iron Covers & Grid Plates**

LOCATED IN PTA

184

**Store Room Content: Hook on Straps / Trio Alignment Coupler / AW Slab Stop End / Crane Splice GT24 / Base Plates / Swivel Coupler**

LOCATED IN PTA

185

**Floor Scarifiers x2**

LOCATED IN PTA

186

**Floor Grinders**

LOCATED IN PTA

187

**High Frequency Pokers IRFU (38, 45, 60mm)**

LOCATED IN PTA

189

**Wacker Neuson Tampering Rammers (x2)**S/N: 5534809 / 20041483
LOCATED IN PTA

190

**Concrete Vibrating Units (+/- 20)**

LOCATED IN PTA

191

**Petrol Generators (x5)**

LOCATED IN PTA

192

**Gasoline Engines (x3)**

LOCATED IN PTA

193

**Pan-Auto K350 CO2 Mig Welder w/ Panasonic Feeder**

LOCATED IN PTA

194

**Pneumatic Jack Hammers, Cable & Tusker 1600Kg Winch**

LOCATED IN PTA

195

**Water Pumps (x3)**

LOCATED IN PTA

196

**Wacker Neuson Vibratory Roller**

LOCATED IN PTA

197

**Assorted Electrical Cable**

LOCATED IN PTA

198

**Store Room Content: Lifting Hooks, Anchor Screws, Toggle Clamps, Stop-end Tie's**

LOCATED IN PTA

199

**Ringlock Ledger 1000mm (Blue) (+/- 10748)**

LOCATED IN PTA

201

**Ledgers UH 200 (+/- 1138)**

LOCATED IN PTA

202

**Ringlock Standard 1500mm (+/- 1675)**

LOCATED IN PTA

204

**Yellow Road Barriers**

LOCATED IN PTA